



TOMMY INVEST ELECTRONICS

HORDOZHATÓ, VEZETÉK NÉLKÜLI HŰ KAMERA ÉS ÉRZÉKELŐINEK FEJLESZTÉSE

production of electronic products

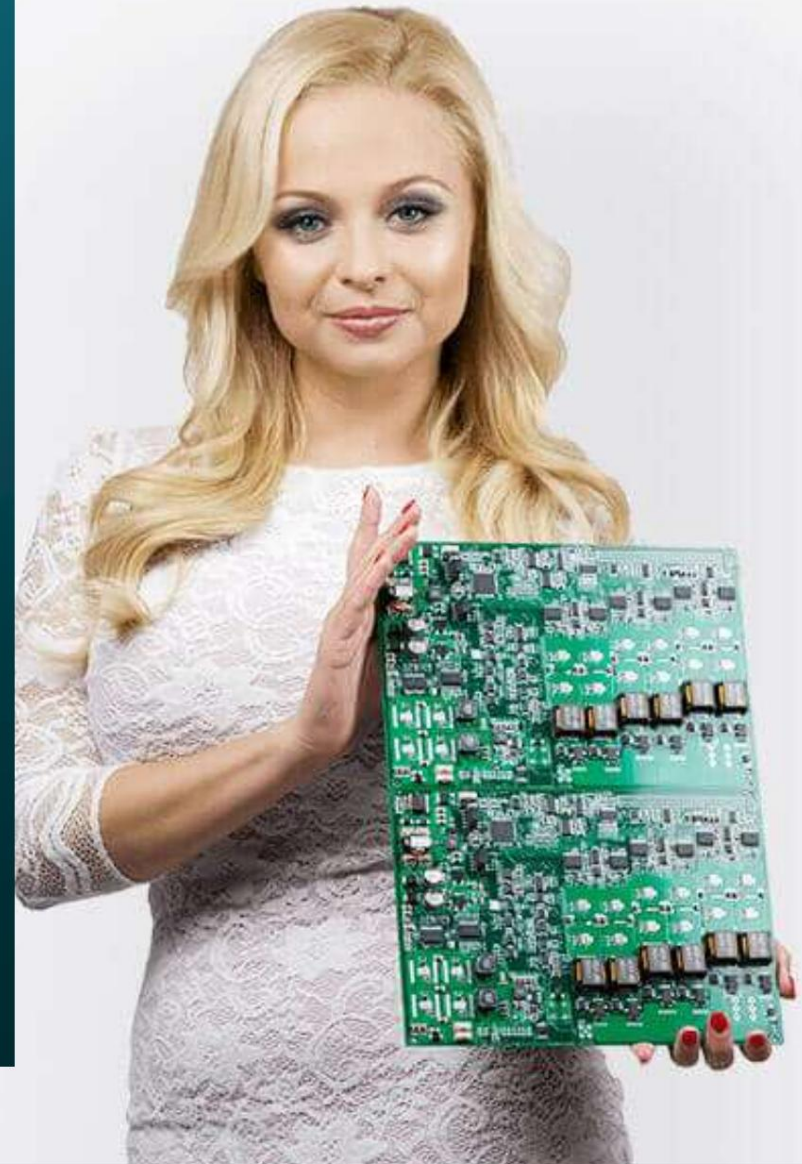


OUR COMPANY

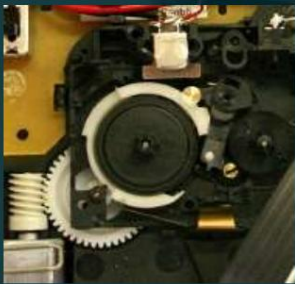
The company Tommy-Invest Elektronika LLC (TI-Electronic) was founded in 1992. In the first years, the main activity was scientific research work.

The EM Industrial Park located in Szécsény has now become one of the largest contract manufacturers of high-quality electronic products in Central Europe. Today, the company has 12,000 m² of production space, with a staff of about 300 people. The company has a development and quality control department. Our work is distinguished by a high quality standard, accurate delivery, favorable prices and flexibility in working with

customers.



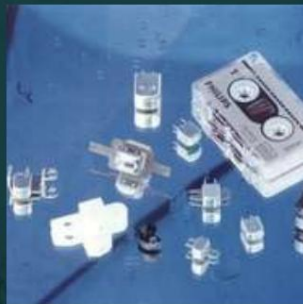
MAIN ACTIVITIES:



• **Assembly of electronics**
boards and precision
mechanics elements



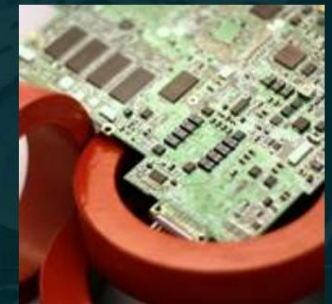
• **Lighting**
technique



• **Production**
magnetic
heads



• **Production of**
inductive components



• **Ferrite**
technologies and
technologies with
using
nanocrystals

MAIN PARTNERS



•Medical
diagnostics



•Automotive
industry



•Banking equipment



•Industrial electronics



•Office equipment



Consumer electronics



•Lighting
technique



•Entertaining
electronics

ACTIVE EYE – THERMO-OPTICAL SURVEILLANCE CAMERA

- Compact size • Wireless system • Protective case against temperature changes and impacts. • Rain-resistant materials • Infrared sensor up to 70 m. • Infrared flash • Night vision camera • Laser motion sensor • High image resolution
- Connection to GSM system • Adjustable perimeter angle • Wide-angle lens • Intelligent PIR detection
- Multiple vision modes • Solar panels for charging



•

ACTIVE EYE

ACTIVE EYE is a professional camera with a protective housing, designed for indoor and outdoor video surveillance in harsh weather conditions.

conditions.

Portable and wireless, this model is ideal solution for short-term or continuous monitoring, where power parameters are limited.

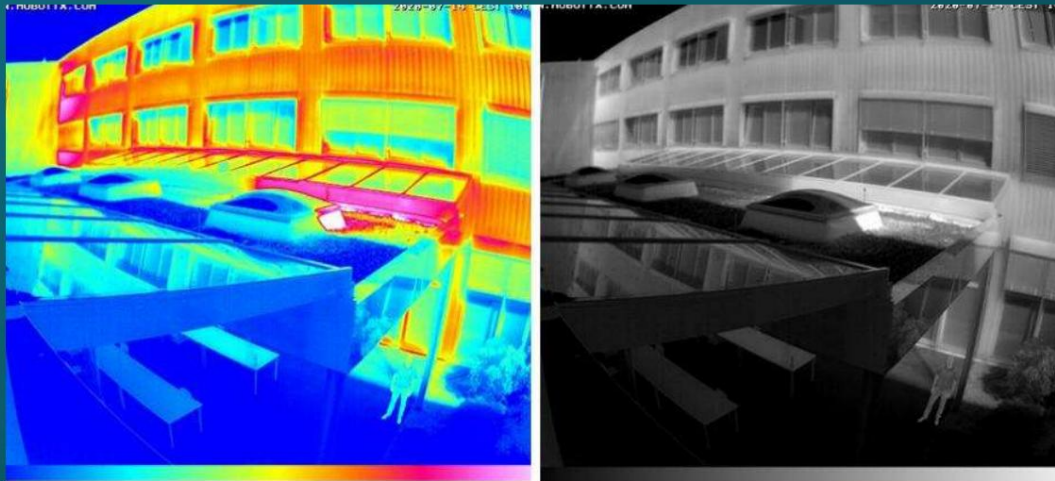
With GSM integration, the camera captures and transmits security images directly through the cellular network, at the touch of a button on your phone. The camera is easy to install, configure and

exploit. Removes activity at any time of day or night in high permission.



–ACTIVE EYE

Active surveillance - can be set up in minutes and moved to a new filming location every night if desired, allowing you to stay one step ahead of thieves trying to detect security systems during business hours.



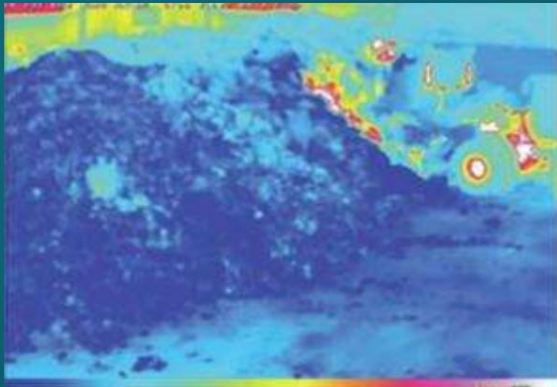
Thanks to the large number of pixels and wide viewing angles (up to $160^{\circ} * 90^{\circ}$)

You can see more details in a scene, cover a larger perimeter area, and detect temperature differences over large distances.

ACTIVE EYE

It will help you analyze a critical situation in advance and take timely steps.

Automatic alarm: - when the temperature exceeds or falls below a certain limit.



Fire detection



Territory protection



Public safety

ACTIVE EYE

With additional modules, the camera can be used as,

Weather station with measurement functions:

- **Thermometer** – air and soil temperature,
- **Barometer** – atmospheric pressure,
- **Hygrometer** – air humidity,
- **Weather vane** – wind speed and direction,
- **Precipitation meter** - precipitation,
- **Evaporometer** – measures evaporation from the earth's surface

• **Seismometer**



ACTIVE EYE – THERMO-OPTICAL SURVEILLANCE CAMERA



Technical capabilities

- External and internal surveillance of residential, commercial and industrial premises.
- Control of thermal processes
- Indoor Air Quality Diagnostics
- Room temperature diagnostics
- Atmospheric pressure diagnostics
- Weather conditions diagnostics
- Diagnostics of soil changes, etc.



Scope of use

- Security companies
- Government systems
- State institutions
- Infrastructure
- Construction projects
- Industrial facilities
- Agrocultures
- Environmental monitoring, etc.



THANK YOU
3A
FOR YOUR ATTENTION



Sakhartseva Alisa

CIS DEPARTMENT EMPLOYEE



alisa.s@ti-electronic.com



+3670 905 6606